

# Creating a Patient Safety Culture

## The Patient Safety Associate Programme

Programme Leads – Victoria Wills, Assistant Director of Safety  
Phillipa Rusher, Patient Safety Improvement Advisor



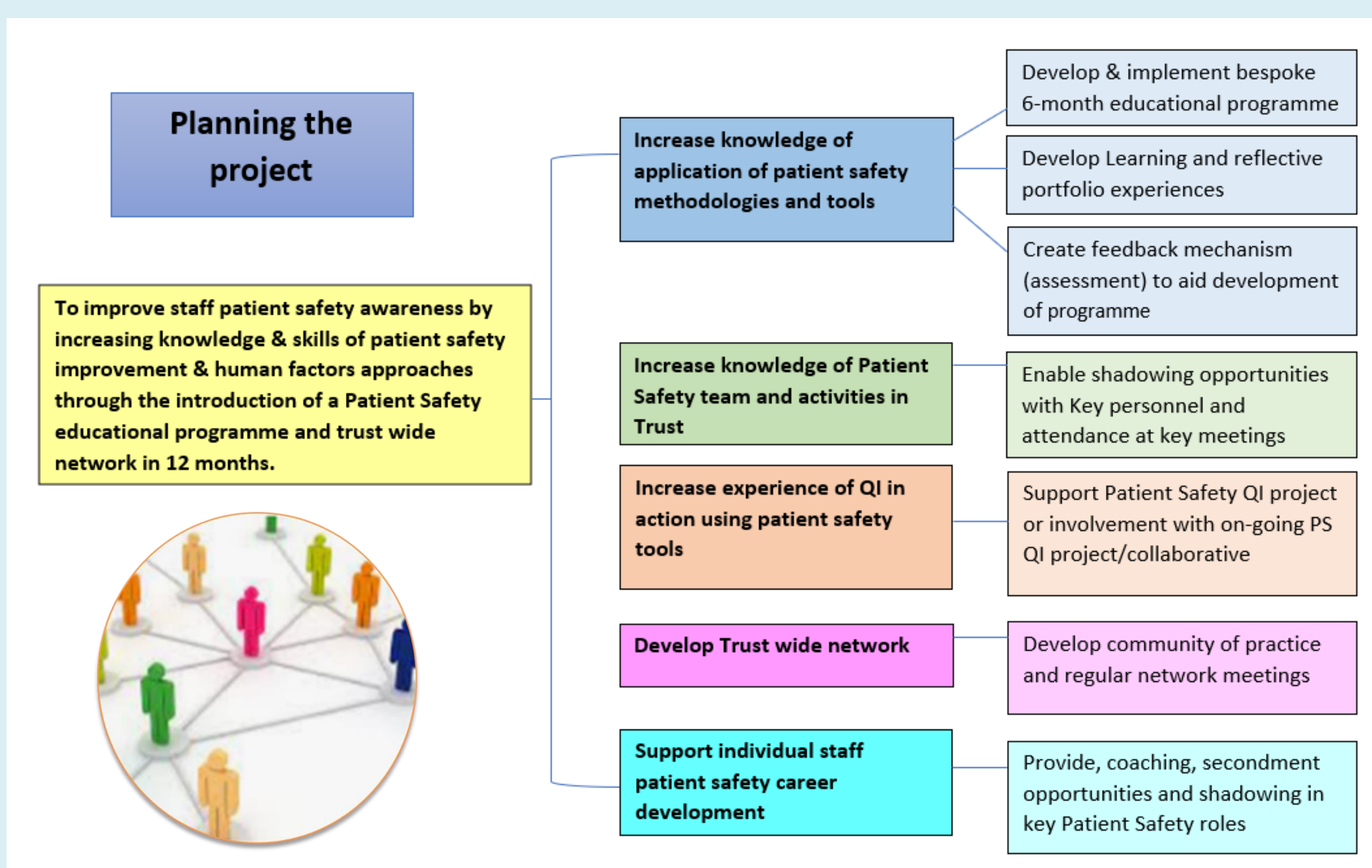
The National Patient Safety Strategy published in 2020 identified a widespread lack of Patient Safety and Human Factors knowledge and skills in particularly Patient Safety improvement and incident management. In 2021, with HEE funding, the Patient Safety Associate programme was developed to create a network of staff who can proactively build staff knowledge and skills in Patient Safety in their local areas and in the Trust.

### The Project Objectives :- to provide a programme

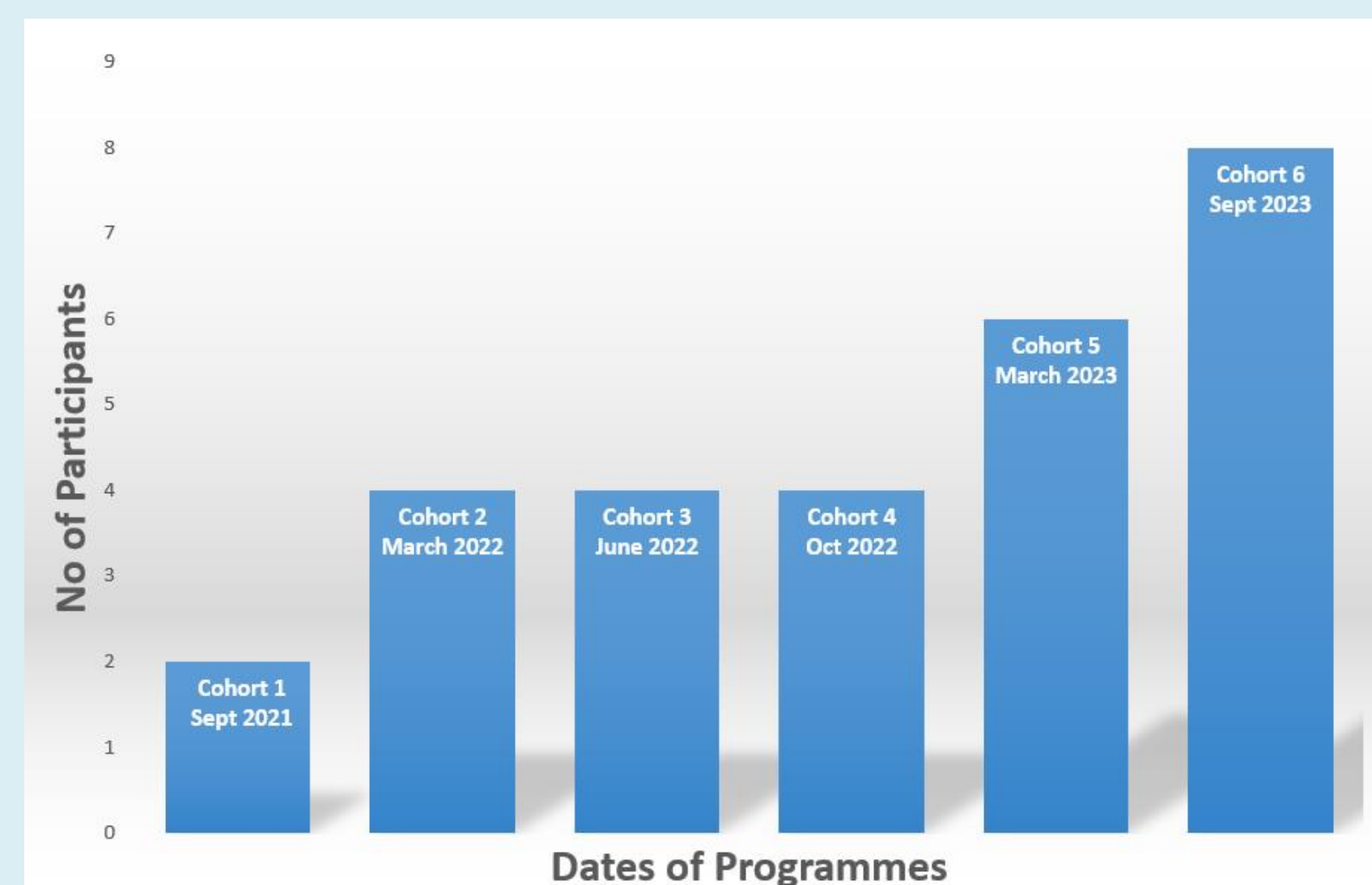
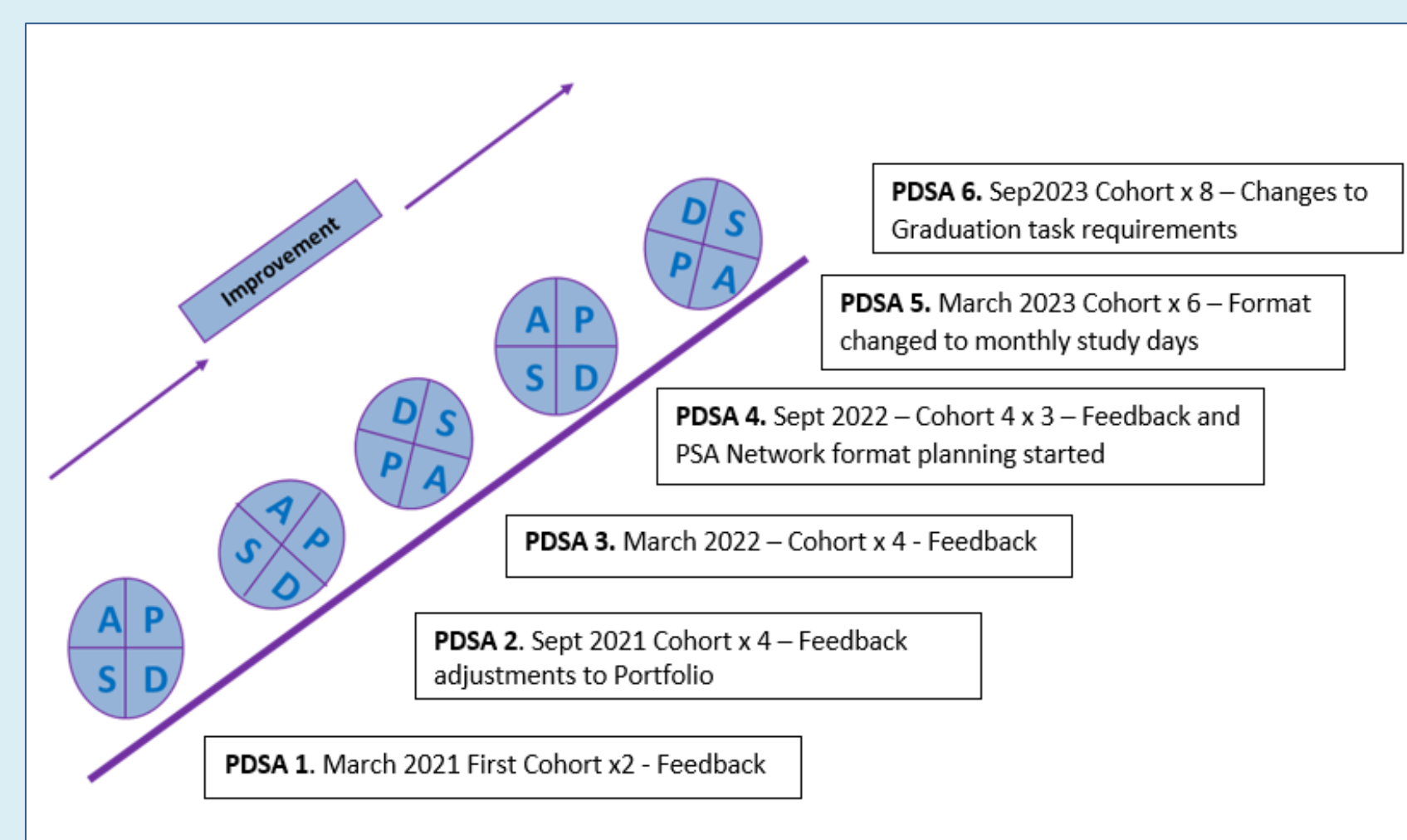
- To acquire understanding of National & Local Patient Safety strategies and key personnel
- To gain skills in tools and methodologies for managing patient safety and incidents
- To educate colleagues in patient safety approaches incorporating a Human Factors approach
- Be part of an active network involved in embedding patient safety knowledge in all areas of the Trust

### The programme

Over six months, one study day per month and 15 hours self-directed study using a modular workbook covering nine patient safety topics with tasks and reflections to be completed.



### Test, test, test .....



### Conclusions

- Pre and post course assessments have demonstrated (data pending) increased the knowledge and confidence of the participants engaging in Patient Safety activities in their areas and Trust wide.
- Feedback enabled us to develop the course format and introduce a monthly study day and develop tasks.
- Three of the 27 participants have new roles within the Patient Safety Department.
- **Challenges** – staff awareness & advertising and encouraging staff from a variety of disciplines to apply.

### The Future

- To widen the scope of clinical and non-clinical staff participating in the course
- To be a prerequisite for all staff in management roles to attend
- To develop the network of associates into a community of practice
- Explore possibility of CAT accreditation